

A scenic photograph of a forest stream. On the left, a large, dark, mossy rock formation rises from the water. Sunlight filters through the dense green foliage on the right, creating bright rays of light that illuminate the water and the surrounding forest. In the distance, a few people can be seen standing on a path or bridge over the stream. The overall atmosphere is peaceful and natural.

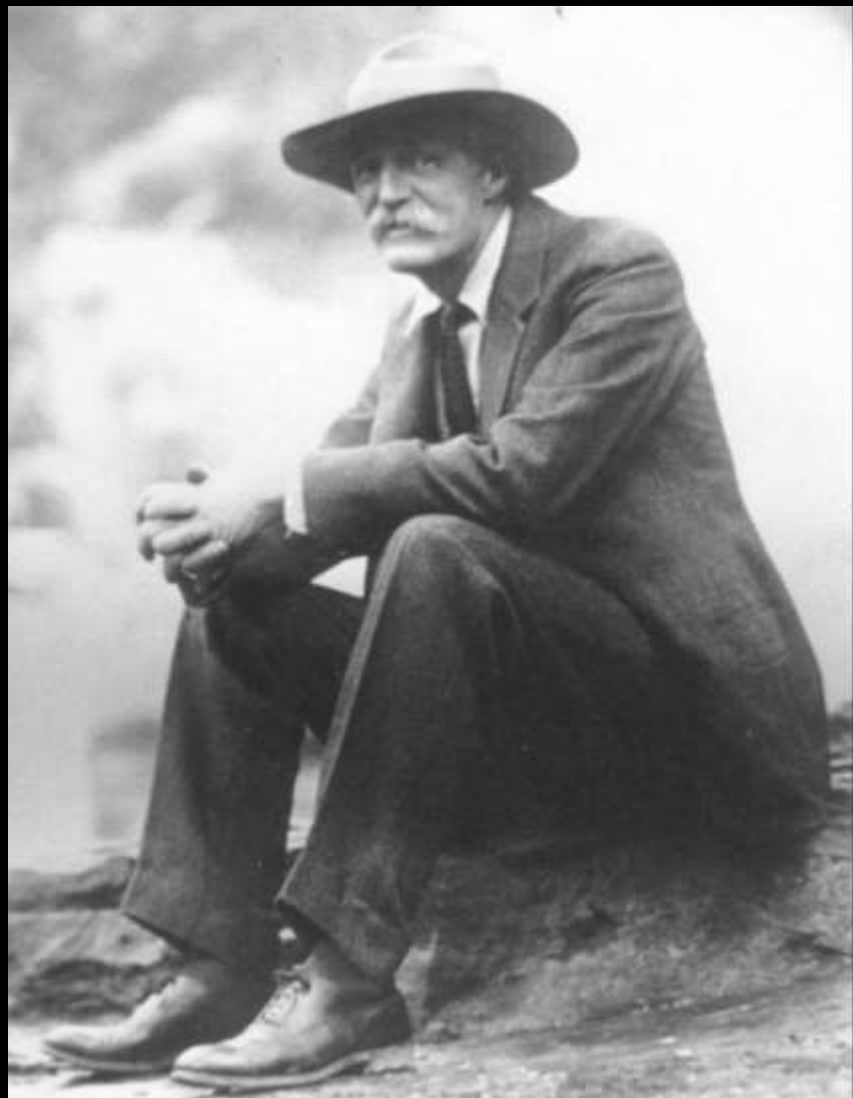
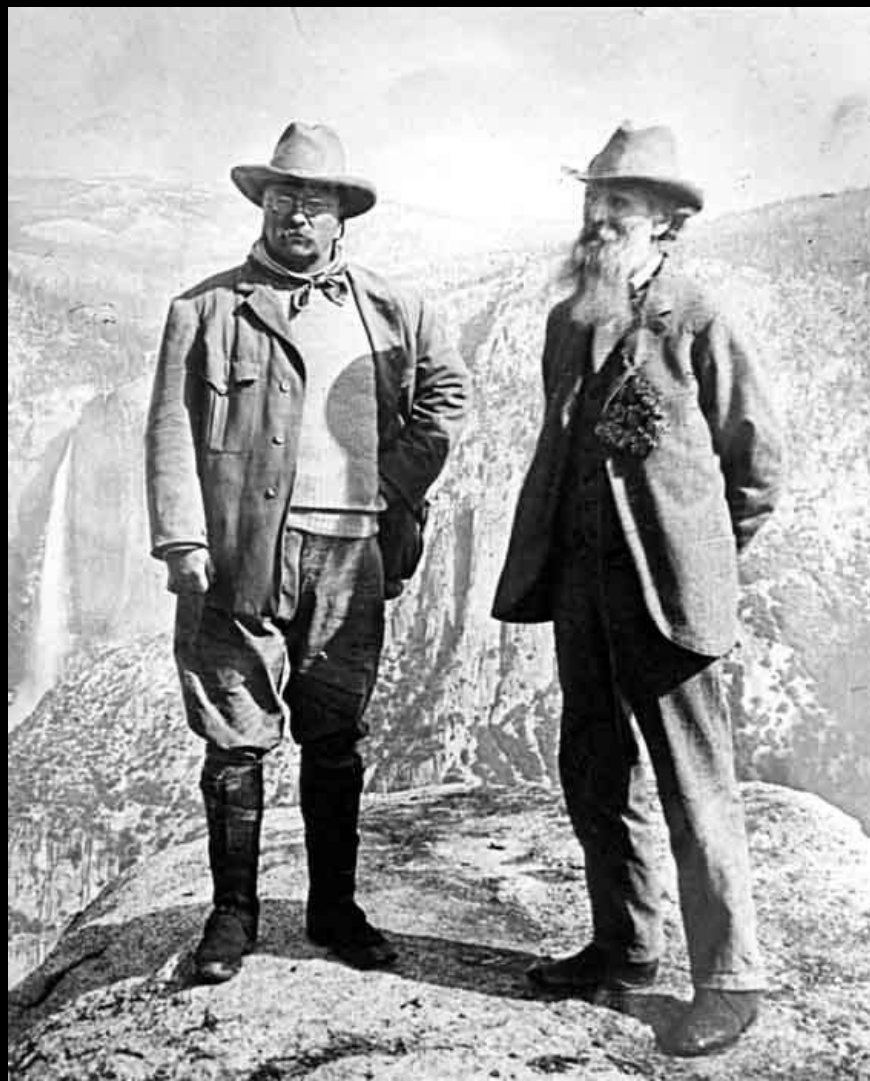
History of Indiana State Parks

www.stateparks.IN.gov

History *of* Indiana State Parks
and
History *at* Indiana State Parks

“Natural monuments stand not only as landmarks of our state’s history, not only as those of the entire west territory out of which Indiana was carved, but they will, with their ancient rocks, dells, and giant trees, continue to preach a silent but mighty sermon to generations yet unborn of the struggles, hopes, and ambitions of pioneer days.”







Natural History









Native Americans Before Colonization










Native Americans After Colonization
















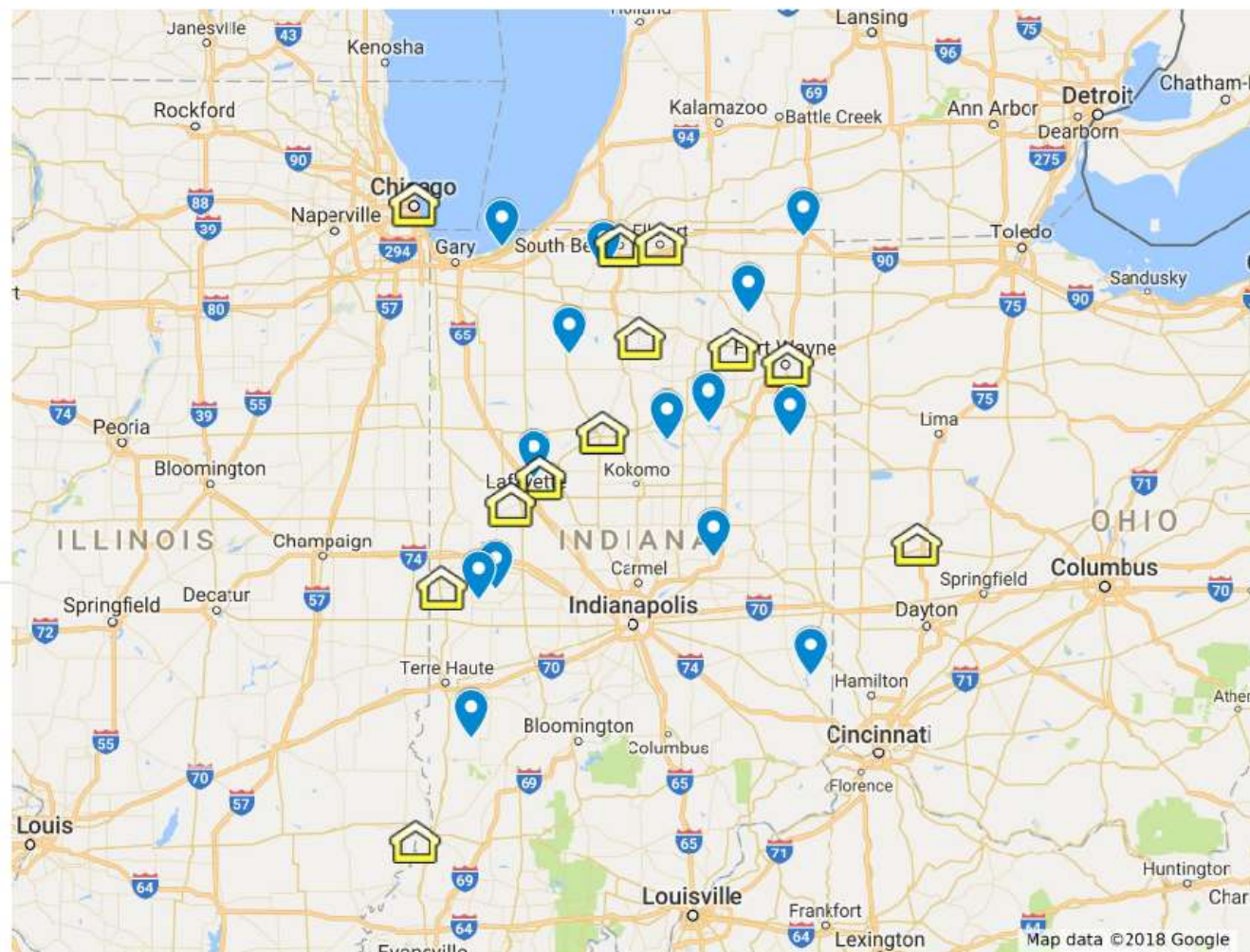
Myaamionki sites and Indiana State Parks

Myaamionki sites

-  Kiihkayonki
-  Saakiweeyonki
-  Mihšiiwiateehi
-  Kineepikomeekwa
-  Old Tip
-  Kiteepikwana
-  Waayaahatanonki
-  Peeyankihšionki
-  Aciipihkakhionki
-  Columbia City, IN
-  Pinkwaawilenionki
-  Šikaakonki

Indiana State Parks

-  Potato Creek State Park
-  Chain O'Lakes State Park
-  Tippecanoe River State Park
-  Prophetstown State Park
-  Shades State Park
-  Turkey Run State Park
-  Shakamak State Park
-  Mississinewa Lake
-  Salamonie Lake
-  Ouabache State Park
-  Mounds State Park



This map shows locations of Myaamia village sites in relation to the locations of Indiana State Parks.

American Revolution and Early Republic





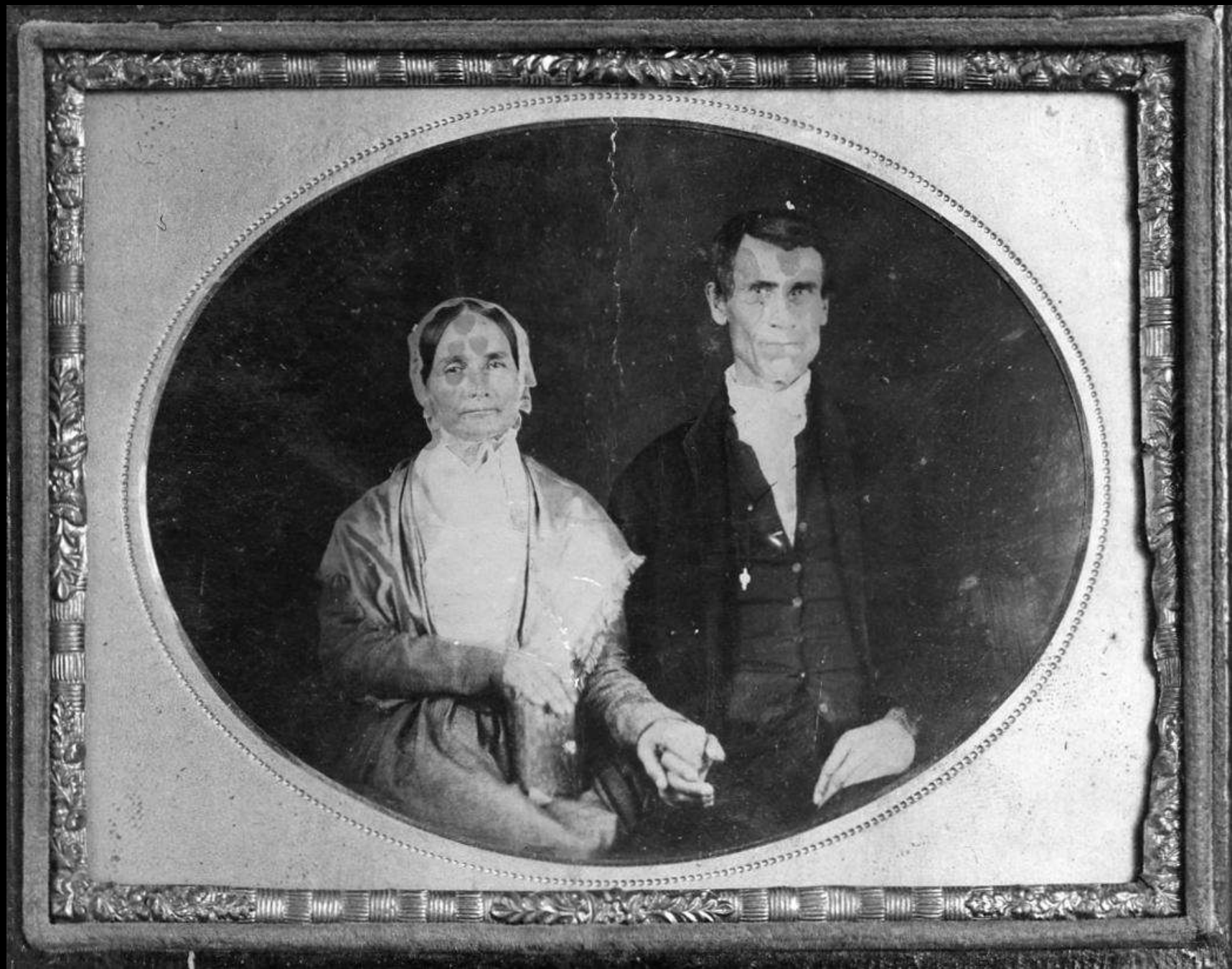




Pioneer Days



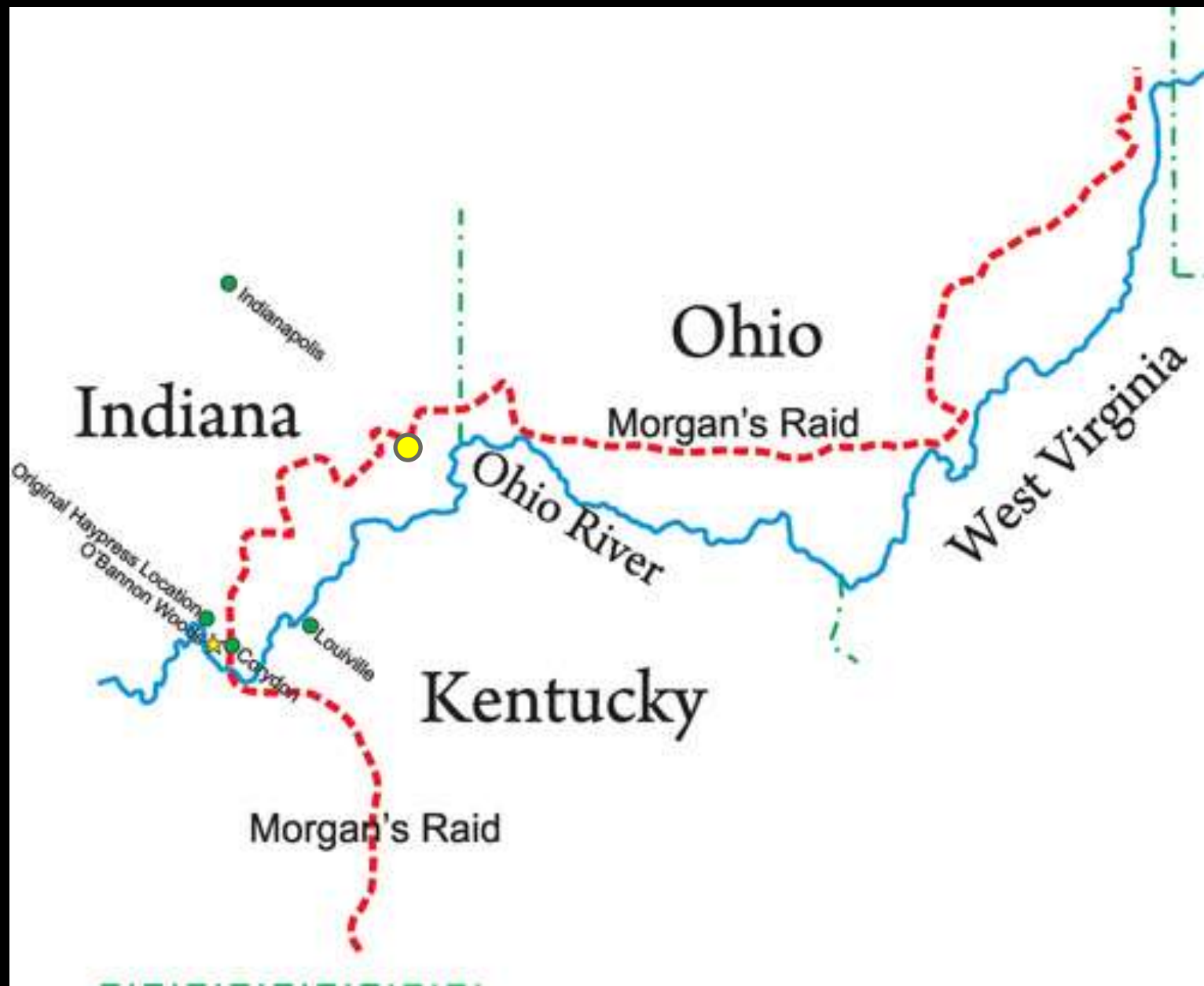




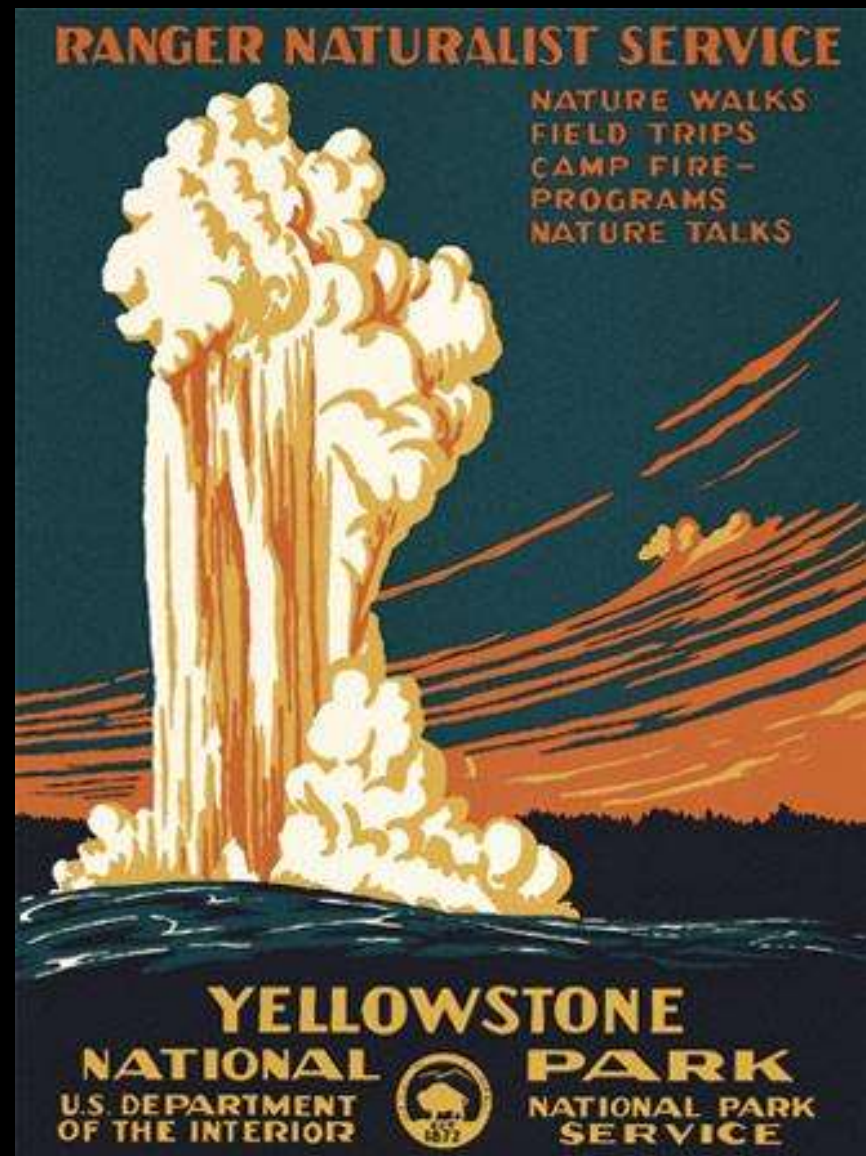


Civil War





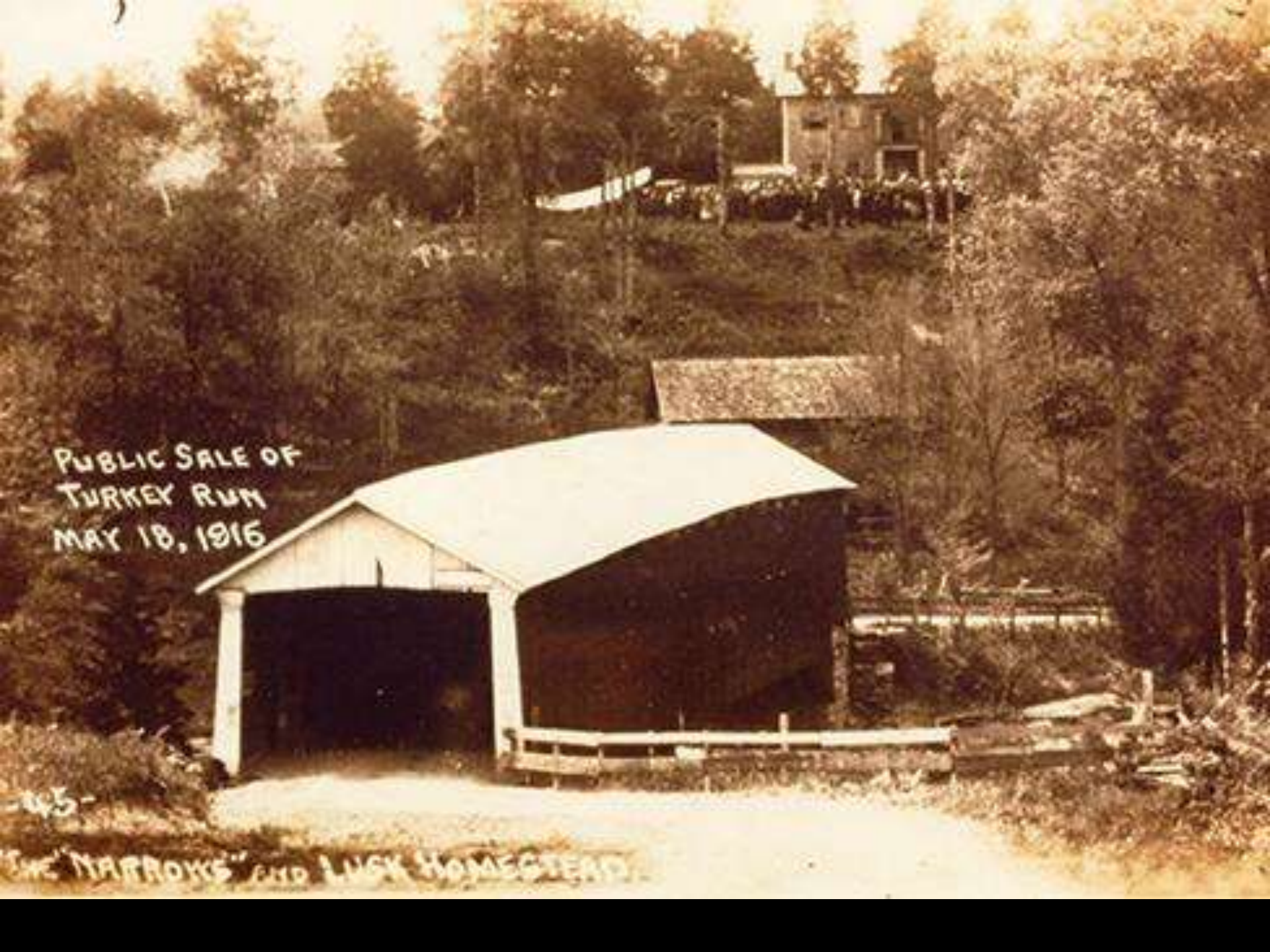
Progressive Era and the Founding of Indiana State Parks











PUBLIC SALE OF
TURKEY RUN
MAY 18, 1916

-45-

"THE NARROWS" AND LUCK HOMESTEAD

(140-226) Friday 19

Sick about Turkey Run - Took him
to bed!



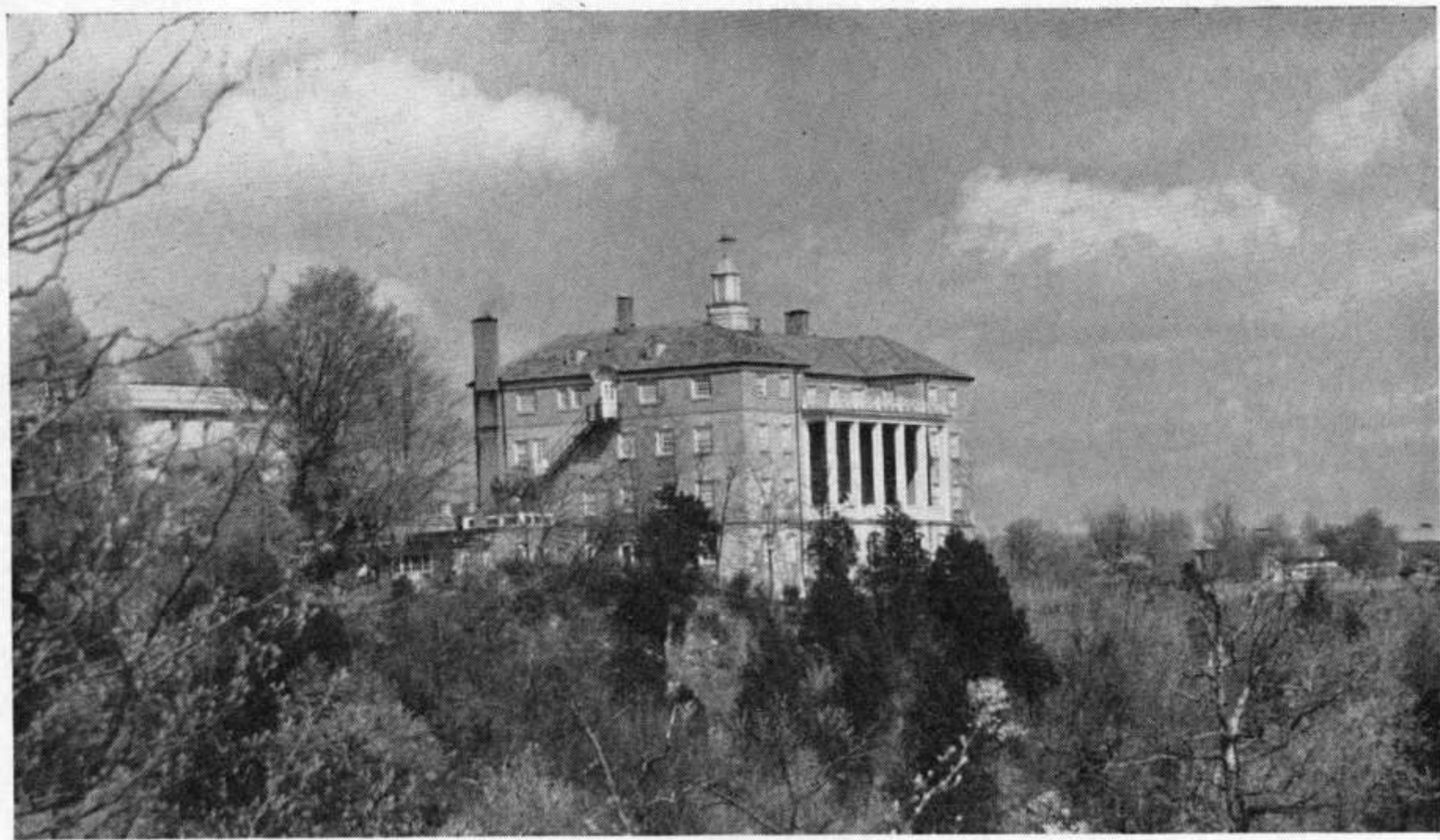
Canyon Inn, McCormick's Creek State Park, Spencer, Ind.







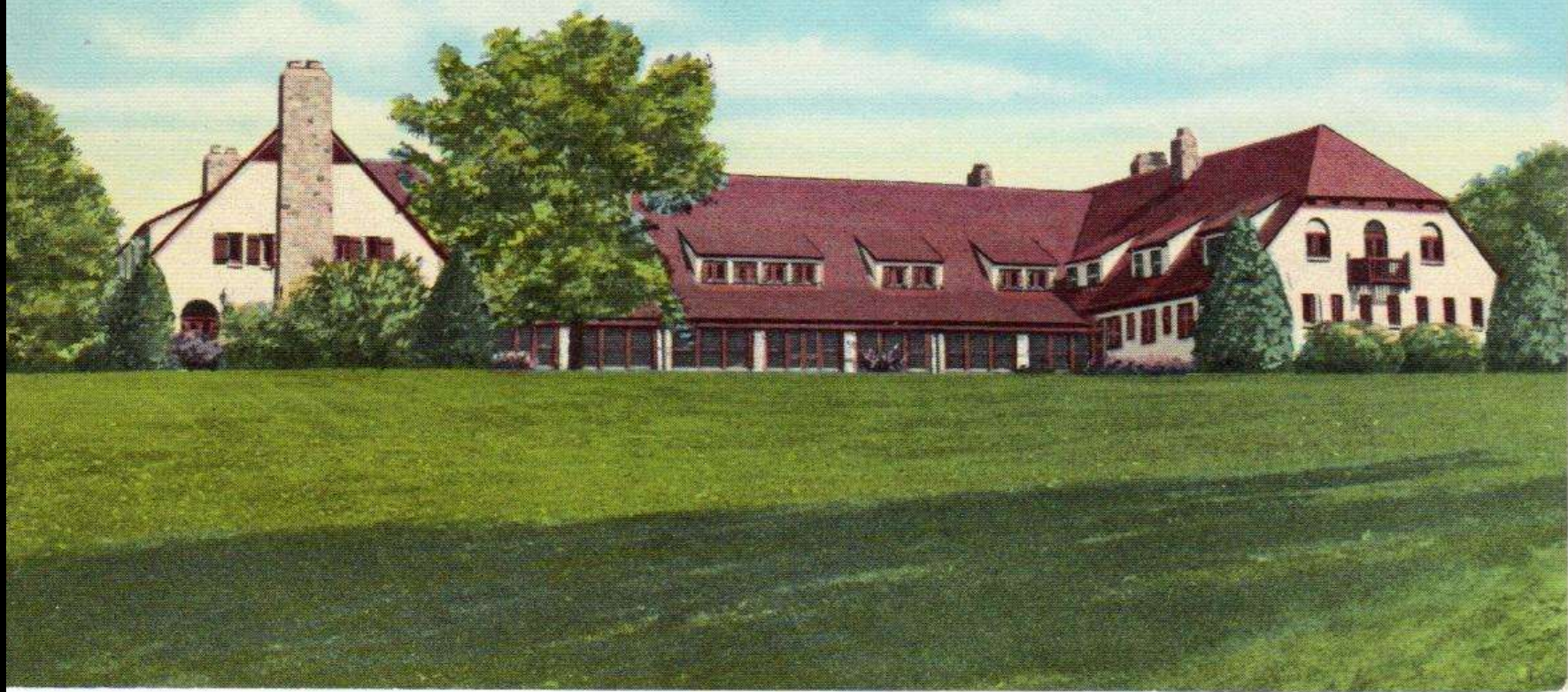
Early Days of Indiana State Parks



CLIFTY INN IS SITUATED ON THE CREST OF A HILL 400 FEET ABOVE THE OHIO RIVER



*J-101—Potawatomi Inn, Pokagon State Park,
Northern Indiana*





PHOTOS BY INDIANA DEPARTMENT OF CONSERVATION







Beginnings of the Interpretive Naturalists





The New Deal



























CCC Co. 517, 1934
A Barreack

William Myers, Leader





211

VISIT & ENJOY

THE HARRISON COUNTY
STATE FOREST

PREVENT-FOREST-FIRES

THEY DESTROY-TIMBER-& WILDLIFE

INDIANA 1936 24,709 ACRES BURNED
\$206,310 DAMAGE DONE

THE FORESTS NEED YOUR HELP









Entrance at Tippecanoe State Park
WINAMAC, INDIANA

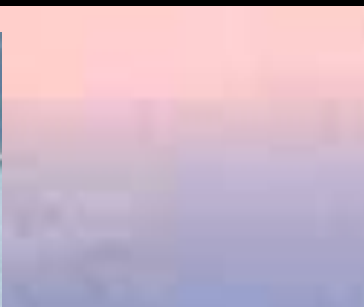


Post World War II and the Baby Boom



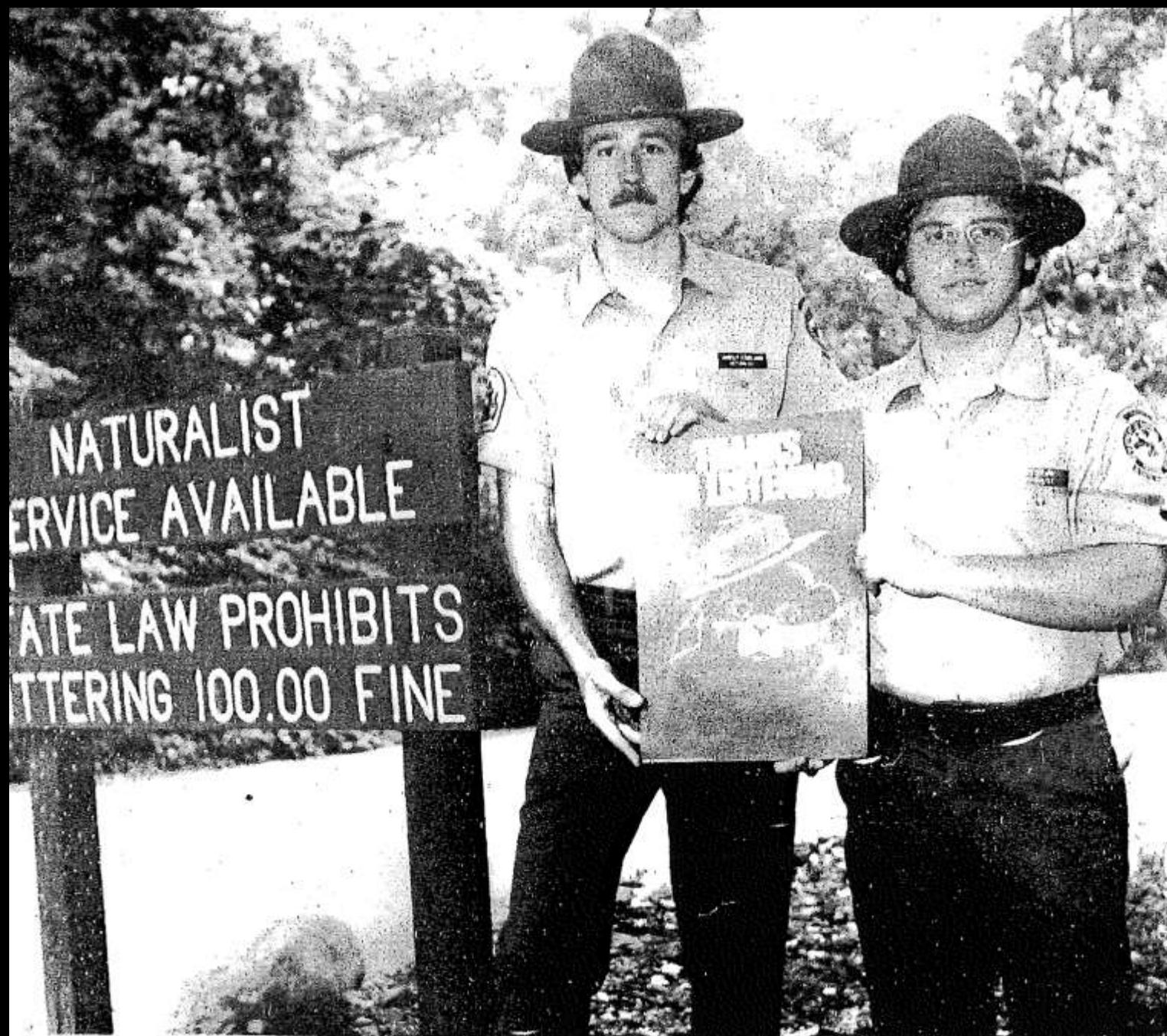








Professional Interpreters and Resource Management





Reservoirs and Flood Control





Latest Round of State Parks



“Our parks and preserves are not mere picnicking places. They are rich storehouses of memories and reveries. They are guides and counsels to the weary and faltering in spirit. They are bearers of wonderful tales to him who will listen; a solace to the aged and an inspiration to the young.”



“Like mighty altars stand our parks....the crowning glory of our land.....So let us keep them as a sacred inheritance , and so transmit them to future generations.”

Thank you!

A scenic photograph of a forest stream. Sunlight filters through the dense green canopy, creating bright rays and illuminating the water. Large, moss-covered rocks line the banks. In the distance, a few people are visible on a path. The overall atmosphere is peaceful and natural.

History of Indiana State Parks

www.stateparks.IN.gov